



Visual Story

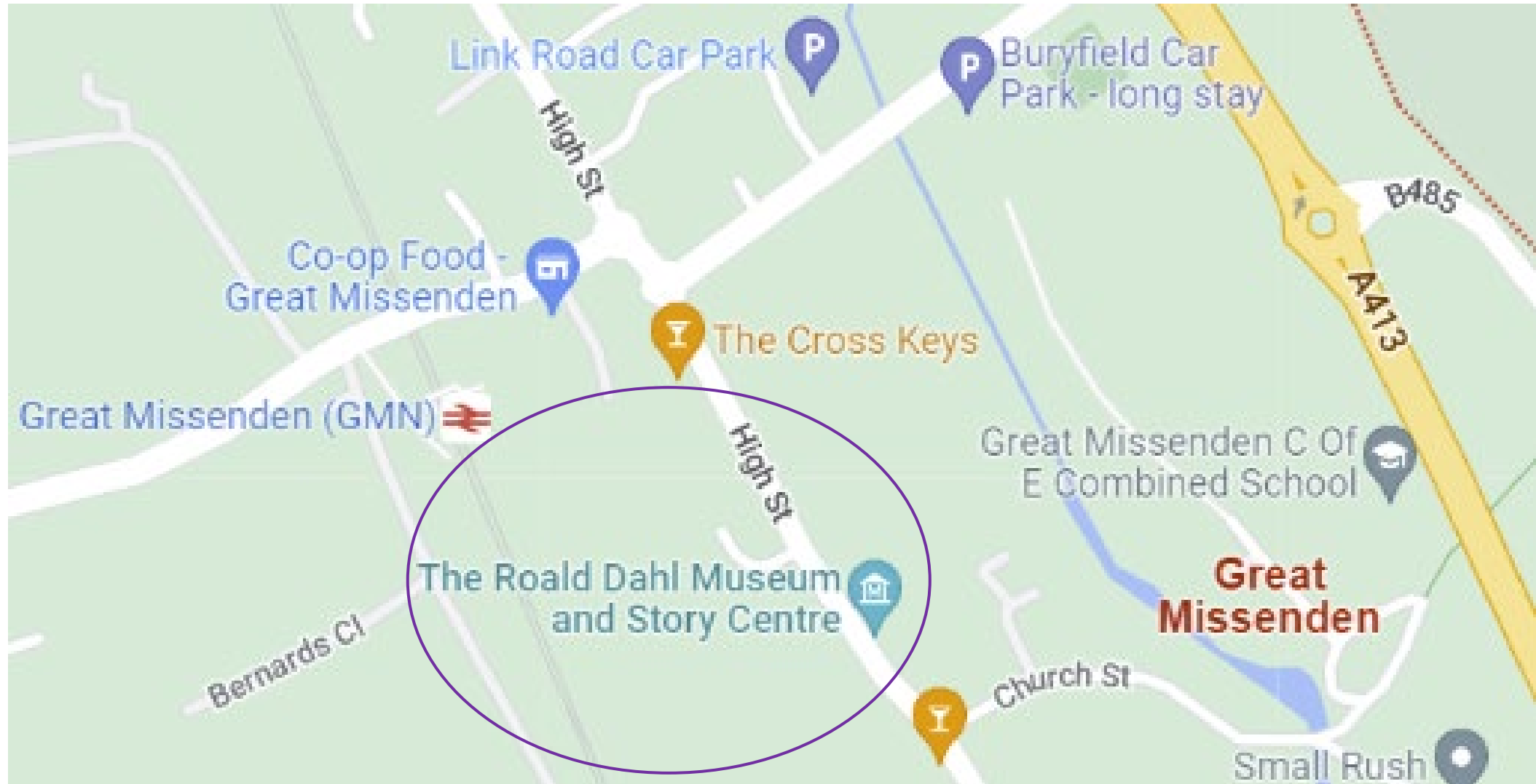
A full accessibility guide can be found here: [The Roald Dahl Museum and Story Centre | Accessibility Guides](#)

You can watch a 360° tour here: [The Roald Dahl Museum and Story Centre](#)

Welcome to the Roald Dahl Museum



Where we are in Great Missenden



Museum entrance



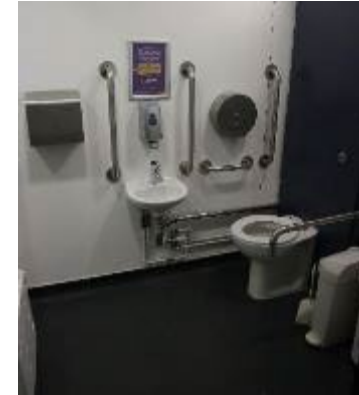
Toilets

There are two toilets next the entrance.

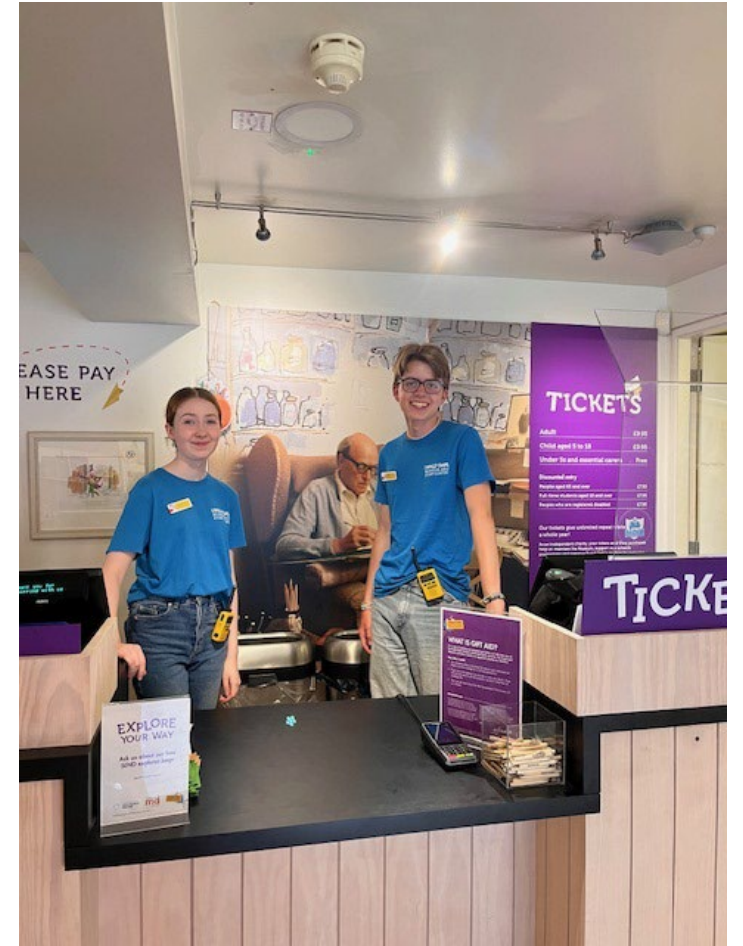


There are also toilets in the corner of the courtyard. The toilets talk and make funny noises. The nearest Changing Places toilet is at Tesco in Amersham 6 miles away.

<https://www.changing-places.org/find>



Ticket desk



Shop



Crocodile Corridor



Boy Gallery



Solo Gallery



The Story Centre



George's Crafty Kitchen



Lower Babbling Room



Lunch rooms

Children Eating Room



Chomping Room



Courtyard



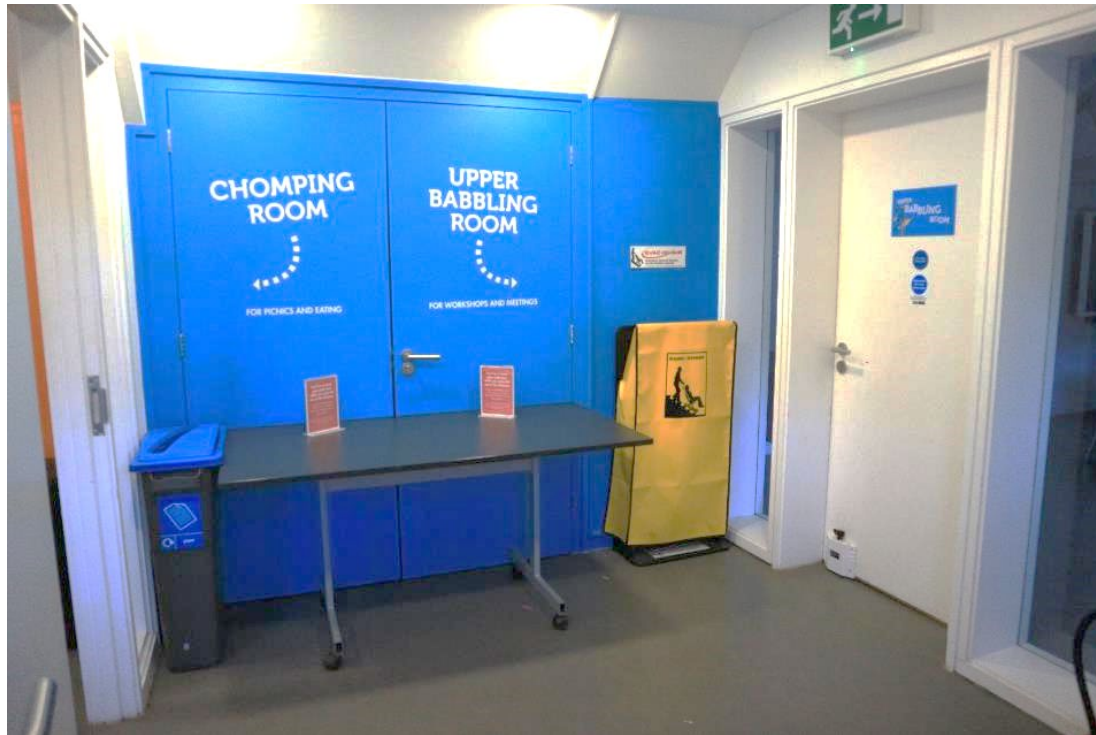
Museum Café Kiosk - The Filling-Station



First floor – stairs or lift



Corridor area with sink



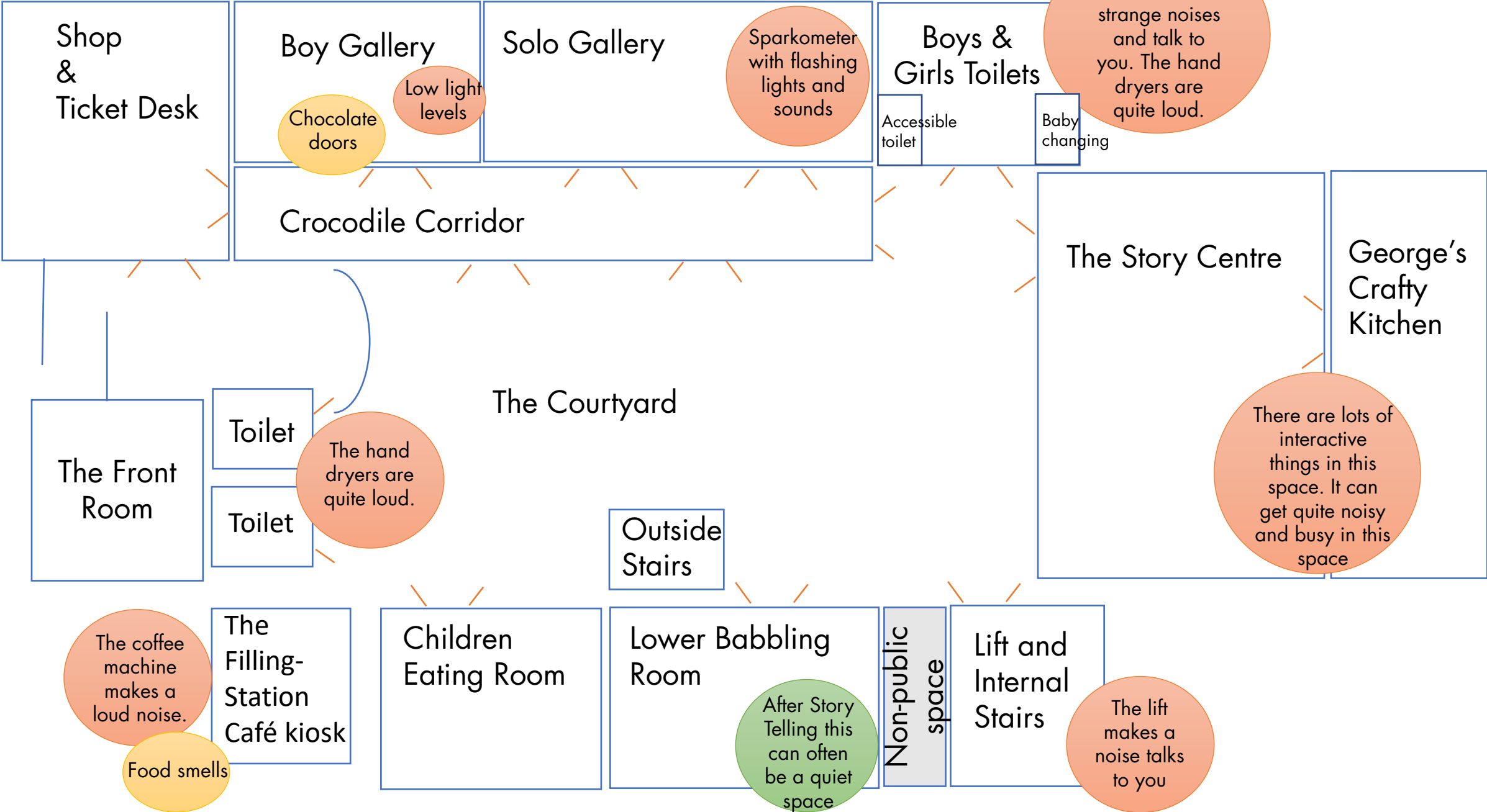
Museum Prep Area



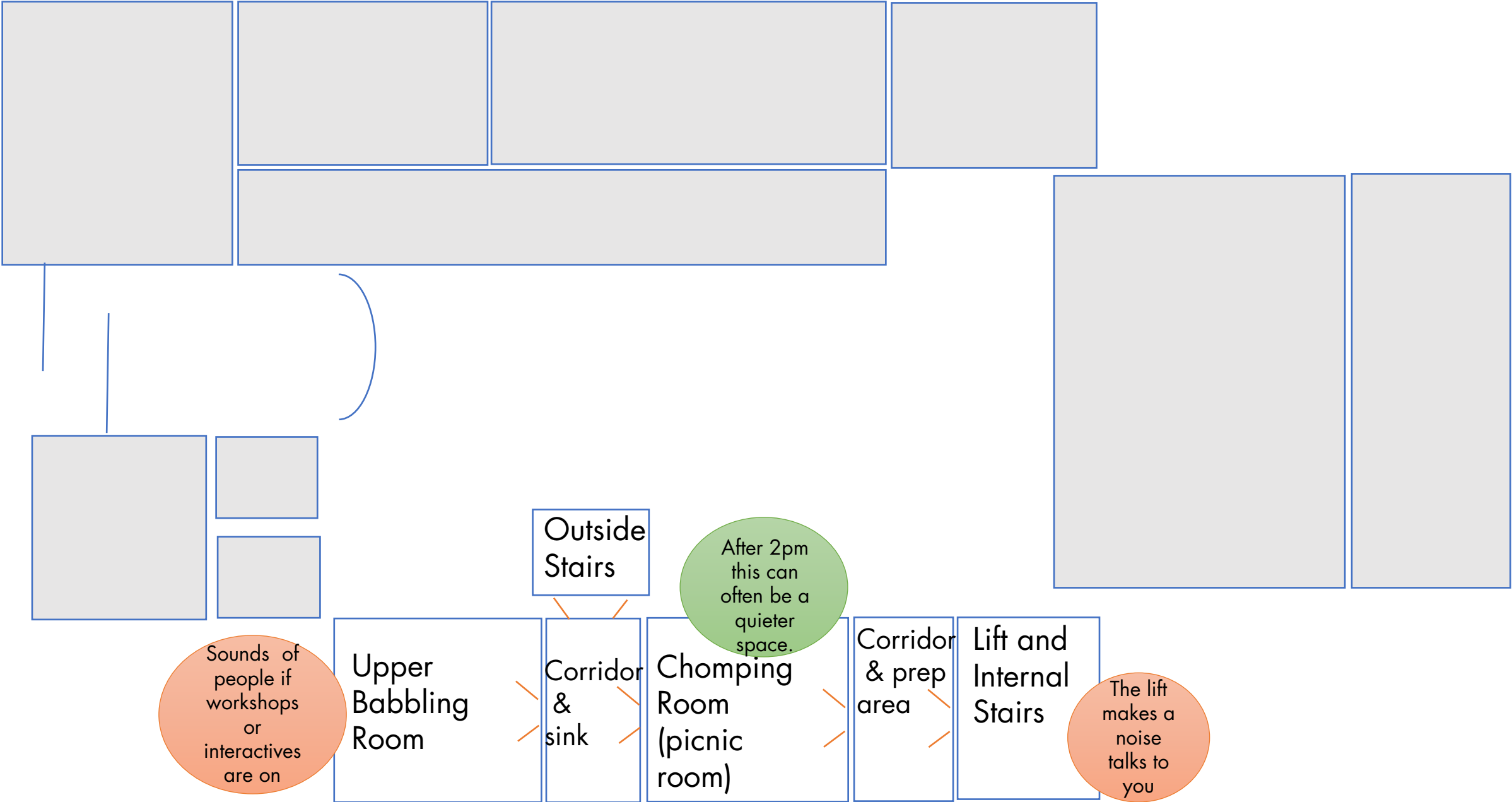
Upper Babbling Room



Ground floor



First Floor



General notes and maps

We are very proud of our Museum and want all our visitors to feel comfortable and enjoy their visit. Here are a few general things you might like to know:

- The Museum is colourful
- The Museum is exciting and can be noisy in busy periods
- You can touch lots of different things around the Museum
- You can try different activities using sound, pictures, craft materials and words
- You can make noise
- You can ask our staff questions
- You can ask our staff for help

**THE ROALD DAHL
MUSEUM AND
STORY CENTRE**

www.roalddahlmuseum.org
