



Visual Story

Welcome to the Roald Dahl Museum



A full accessibility guide can be found here: [The Roald Dahl Museum and Story Centre | Accessibility Guides](#)

You can watch a 360° tour here: [The Roald Dahl Museum and Story Centre](#)

Who we are

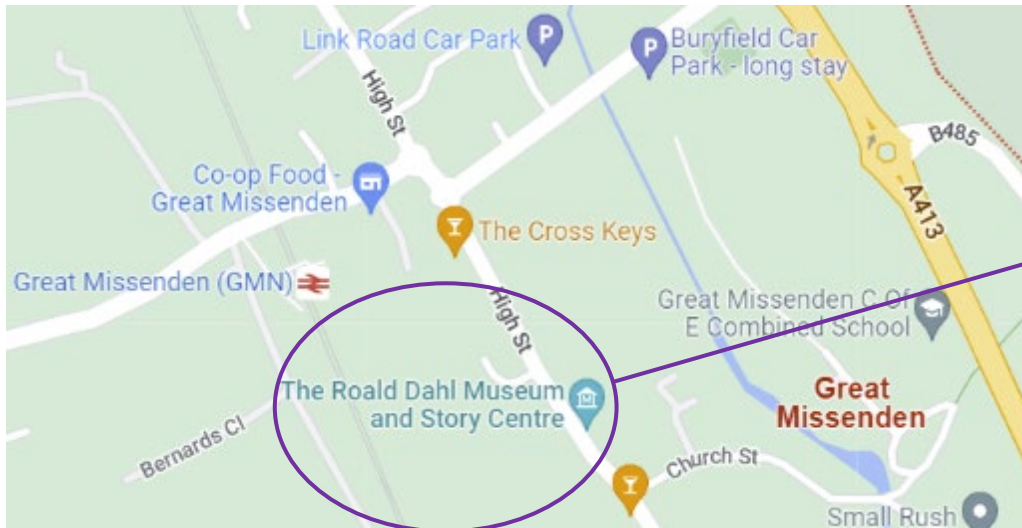
In this museum you will learn about a famous writer called Roald Dahl who wrote lots of children's books.

The museum tells these stories in a fun way and you can dress up and play with different things around the museum.



Where are we?

- The museum is in a little village called Great Missenden
- The village has lots of shops and old buildings
- The roads and pavements in the village are small so watch out for cars on the road when it gets busy
- The museum is in the middle of the village



How to get here

Car

There is no car park at the museum.

If you travel by car, you can park in one of the public car parks in town.

These are:

- Train station carpark (HP16 9AZ)
- Buryfield carpark (HP16 9AE)
- Link Road carpark (HP16 9AE)
- or in the streets in the village.



Train station



Link Road



Disabled bay on High Street



Buryfield



Coach

If you travel by coach, it will park at the coach drop-off point in Buryfield carpark (HP16 9AE) and you walk to the Museum.

How to get here

You can also get to the Museum by train and bus.

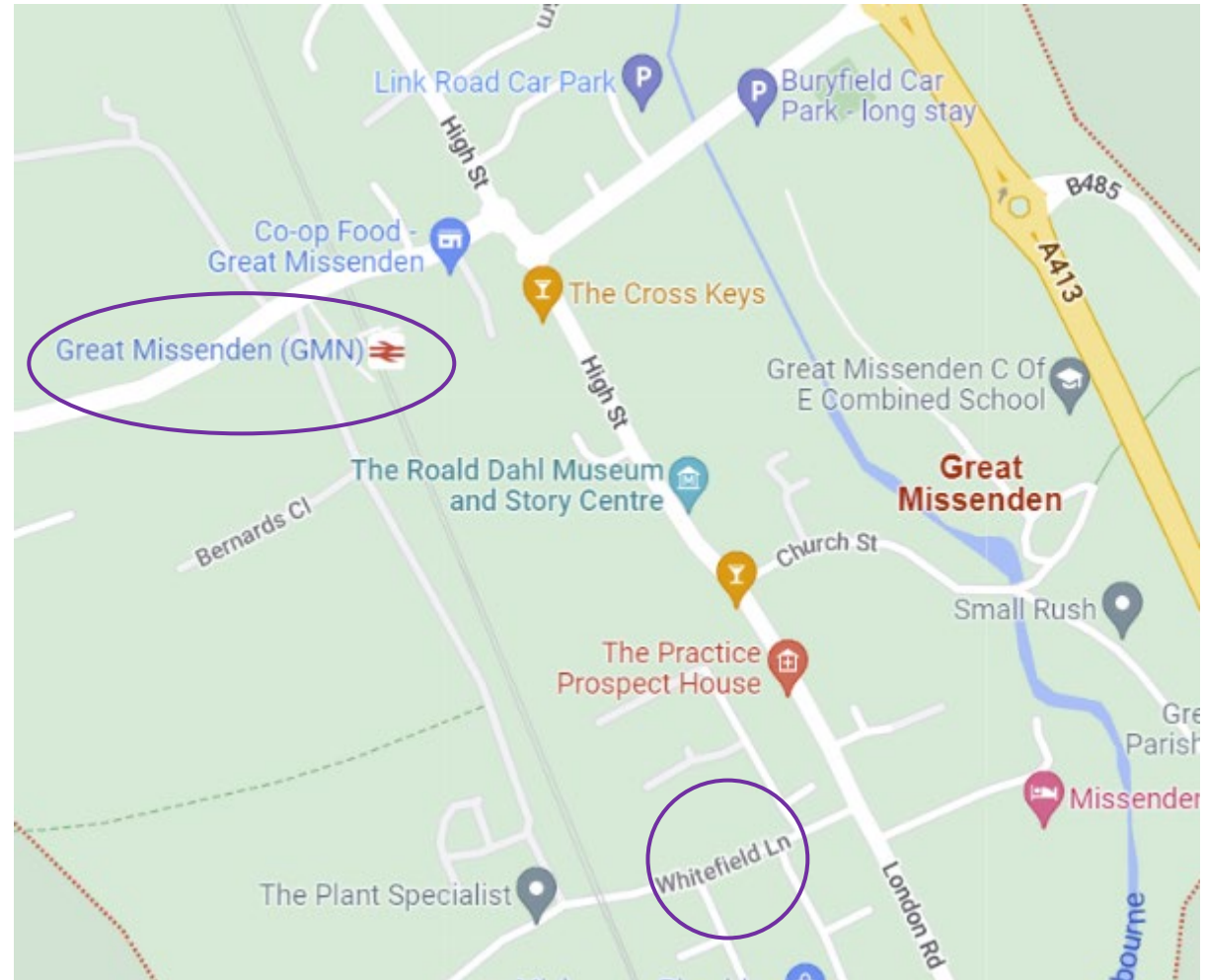
- Train

The nearest train station is Great Missenden. The train station is 0.2 miles / 0.3 km from the Museum. The station lies on the London Marylebone - Aylesbury line and is served by Chiltern Railways trains.

- Bus

The nearest bus stop is Whitefield Lane, located on the High Street near Great Missenden Fire Station. The bus stop is 0.1 miles / 0.2 km from the Museum.

It is a short walk to the museum from these locations and it will take between 5 -10 minutes. The walk is flat from the car parks and bus stop. The train station is on a hill so the walk is downhill on the way to the museum and up hill on the way back.



At the Museum entrance

The entrance to the Museum is an archway. Walk through the archway to the museum.

You will see:

- colourful signs
- a cobbled floor
- a pair of purple gates
- 3 blue doors to our offices

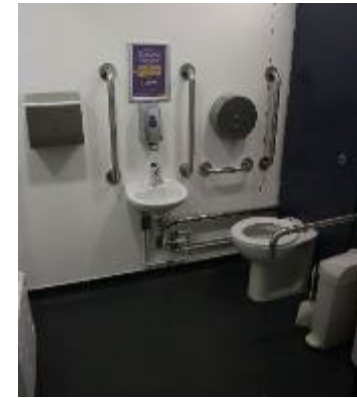


Toilets

There are two toilets next the entrance. The doors are black and there is a ramp and steps to the toilets. Boys and girls can use either toilet. Each toilet has a handbasin and hand dryer. The hand dryer makes a loud noise! There is an emergency alarm you can pull if you need help.

There are also toilets in the corner of the courtyard. One set is for boys, one set is for girls, and one is an accessible toilet and changing area. The toilets talk and make funny noises. This is fun but might surprise you if you are not expecting it! The hand dryers make a loud noise too.

The nearest Changing Places toilet is at Tesco in Amersham 6 miles away. <https://www.changing-places.org/find>



Ticket desk

The ticket desk is inside the shop. This is through double glass doors that are quite heavy. The floor is uneven and there is a sign saying 'mind the step'



At the museum you will meet our Visitor Experience Team.

They wear staff t-shirts and name badges. They are at the ticket desk, in the galleries and at storytelling.

Please ask the team if you have a question or need help. We are very friendly and enjoy speaking with our visitors.



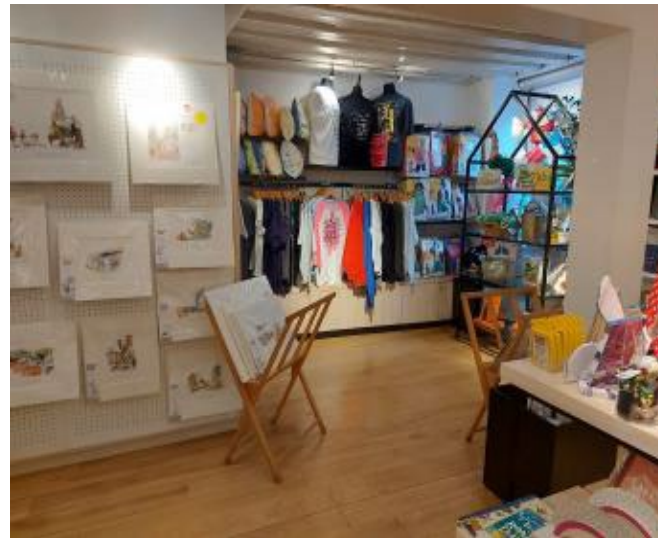
Shop

The shop is next to the ticket desk

- The shop is small
- On busy days it can be noisy
- The till machines make a noise
- We might have music playing

You will see

- Bright colours and some spotlights
- Different things for sale and on display
- Other people visiting the shop or buying their tickets



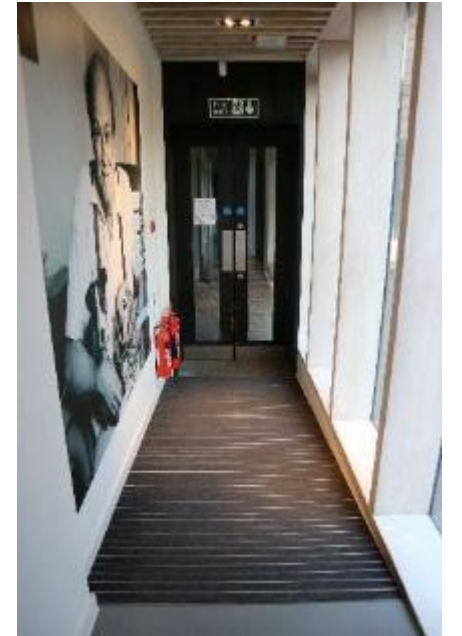
Crocodile Corridor

From the Shop and Ticket Desk you will go to Crocodile Corridor.

You get to the Boy and Solo Galleries from Crocodile Corridor.

You will see

- A bench shaped like a crocodile. You can sit here
- Bright coloured signs and large photographs
- Large windows down one side
- A map of the Museum
- Double doors out into the courtyard. If the weather is nice these might be open



Boy Gallery

Boy gallery is through doors that look like a giant chocolate bar!

You will notice

- the gallery is small and the doors smell like chocolate
- the light is dim and spotlights are used in glass display cases
- colourful images and writing on the walls
- it might be noisy if the Museum is busy. During school term time schools also use the space up until 2pm

You will be able to

- touch a pretend school bag
- look at photographs on a light box
- listen to and read information on a screen
- dress up and look in a mirror



Solo Gallery

There are two doors that are always open
You will see

- Writing, bright colours, photographs
- Pictures on the walls and ceilings
- Flashing lights and buttons to push
- It can be noisy here if lots of people are here. During school term time schools also use the room till 2pm

You will be able to:

- See items from Roald Dahl's Writing Hut
- Play on the Sparkometer. It has flashing lights and buttons to push
- Open drawers and touch things
- Dress up and pretend to fly in a plane



The Story Centre

This is a gallery where you can play. We sometimes tell stories here when it is the school holidays.

You will see:

- The space is colourful and has pictures and writing on the walls
- There is a screen playing a short film with sound
- It can be noisy when it is busy. During school term time schools also use the space up until 2pm

You will be able to:

- Dress up and look in mirrors
- Hear and make different sounds and wear headphones
- Cut out with scissors
- Use paper and glue to create a character
- Sit in a pretend chair of Roald's where he wrote stories



George's Crafty Kitchen

This is an activity room; you get here through The Story Centre. There are tables and chairs for you to use, and the area is decorated with artworks people have created. It can be a noisy place when it is busy.

You will be able to

- help yourself to activity sheets
- use scissors, glue and coloured pencils
- use craft materials of different textures



Lower Babbling Room

This room has exhibitions in it. It has been made to look like a wood. We also give talks and do story telling in here. You get to the room from the courtyard and it has a black door. Exhibitions might include sound, moving images, smells or dressing up. When a school is visiting the space is closed to the public until 2pm.

You will see

- A screen playing images and sound
- Lots of pictures on the walls
- Pretend trees and leaves
- Pretend wooden signs



Storytelling

Storytelling is in the holidays and some weekends. Storytelling is fun and the storyteller might ask the audience to join in if they want to. It can get busy and noisy.

You will see

- The storyteller getting dressed up in a costume
- Other visitors getting dressed up
- Objects to play with

You will hear

- People making loud or strange sounds as part of the story



Lunch rooms

Children Eating Room: This room is on the ground floor. This is used by Schools in term time until 2pm. After that it is used by general visitors. It has a yellow door. Inside are wooden tables and benches. It has a large photograph of Roald Dahl and pretend wooden trees. There is a bin.

No children are eaten in here! 😊



Chomping Room: The Chomping room is a lunch area for visiting schools in term time, and a public picnic area in holidays. There are two ways into this room – one at each end. The doors may be left open. This room is on the first floor and accessed by stairs or a lift.

Inside it has colourful walls and grey tables and benches. Families can eat and drink in the room. There is a bin. There is also an air-conditioning unit that might be making a noise.



The Courtyard

The Museum has an outside space, we call it the Courtyard. It has a bumpy cobbled floor. The space is not completely closed and you can get out on to the High Street. You can find images from Roald's stories in the courtyard. You can also eat your lunch here or just have a sit down.

You will see

- Chairs, tables and parasols
- Flower beds and trees
- Seats around the trees
- A water fountain
- Children playing sometimes
- Rubbish bins



Museum Café Kiosk - The Filling-Station

Our café kiosk is open at the weekend and during the school holidays. It is called The Filling-Station and is in our courtyard.

You will see

- Café staff working in the kiosk.
The staff wear black aprons with the café logo on them
- People buying food and drinks

You will hear

- The coffee machine making noises as it prepares the coffee
- Café staff preparing food
- People chatting
- Café staff calling our people's names when the orders are ready



First floor

There are two rooms upstairs used for workshops (Upper Babbling Room) and picnics (Chomping Room). The spaces are also used by visiting schools until 2pm during term time.

- There is a lift or stairs to access these spaces
- There are also inside and outside stairs
- If you use the lift, it makes a noise and speaks to you as it moves
- If you would like to use the lift just ask any of the Museum staff and they can help you



Corridor area with sink

Outside the Chomping Room and the Upper Babbling Room we have a small corridor area with a sink. The sink has hot and cold water. There is a small stool next to the sink. There is also emergency fire equipment. We sometimes have a table and bin here but not always.



Museum Prep Area

If you access the upstairs rooms by using the lift or the internal stairs you will go through the 'Prep Area'. This is a room our staff use to get workshops ready and store equipment. It's not very interesting in here, you will just use it as a walk way to access the Chomping Room or Upper Babbling Room.



Upper Babbling Room

This is a large room used by schools in term time and the public in the holidays. You access the room through one door. This is normally closed when a workshop is on. The room has windows in the ceiling.

You will see

- A screen showing pictures and sounds
- Colourful walls, pictured and writing
- Sometimes purple plastic chairs and grey tables
- Sometimes yellow cushions and purple beanbags
- Air-conditioning unit that might be making a sound
- a bin

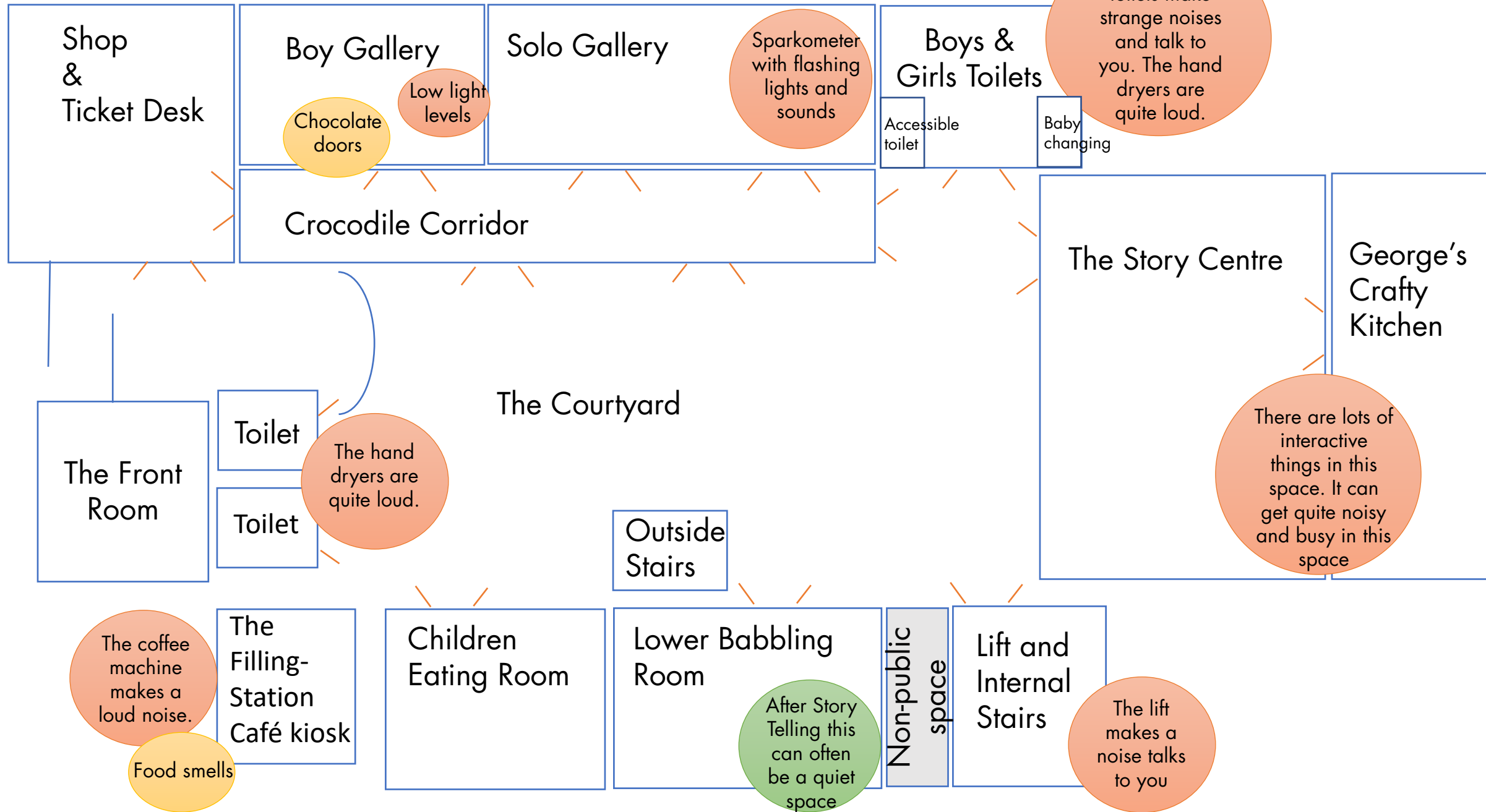


General notes and maps

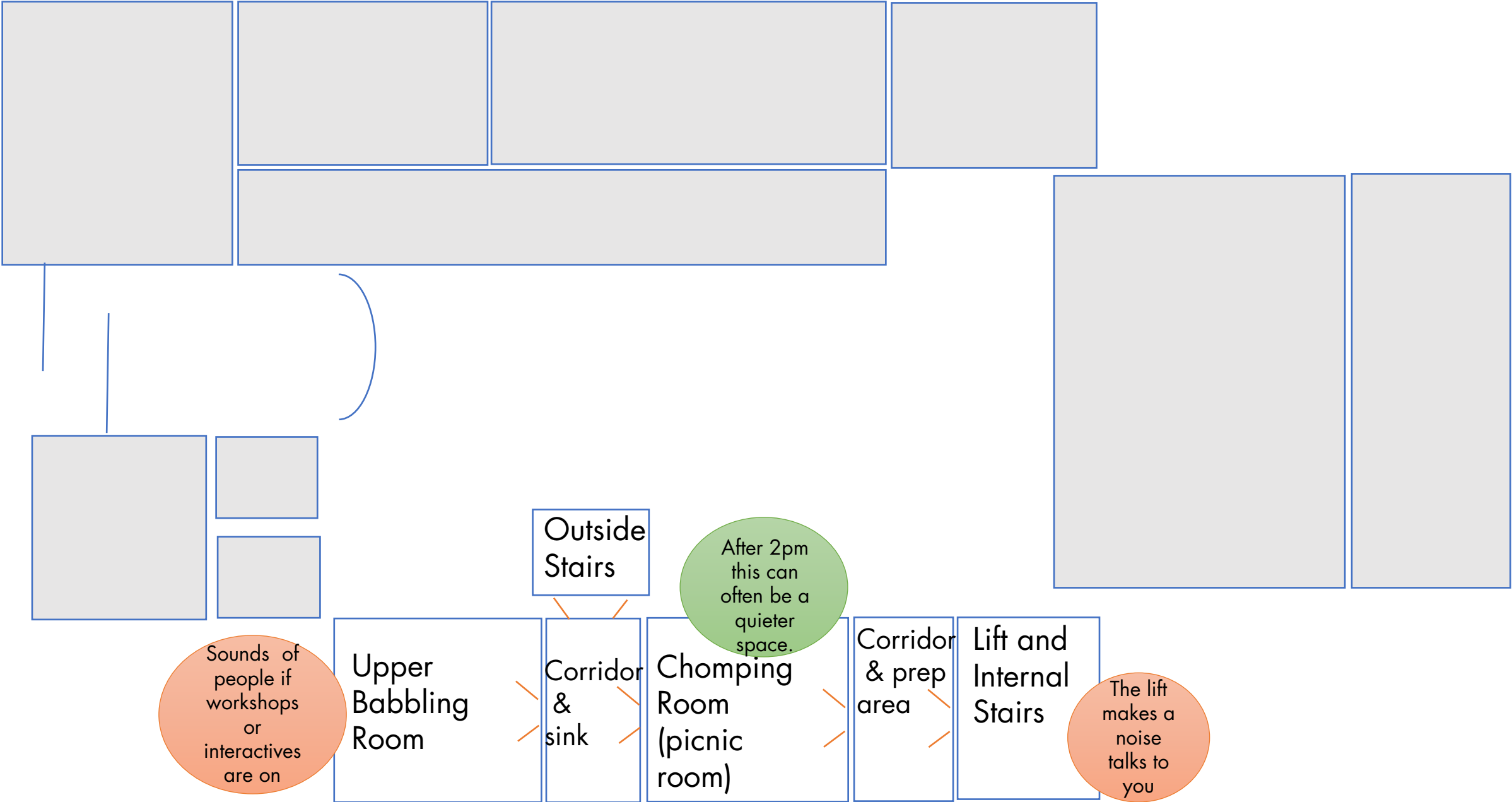
We are very proud of our Museum and want all our visitors to feel comfortable and enjoy their visit. Here are a few general things you might like to know,

- The Museum is colourful
- The Museum is exciting and can be noisy in busy periods
- You can touch lots of different things around the Museum
- You can try different activities using sound, pictures, craft materials and words
- You can make noise
- You can ask our staff questions
- You can ask our staff for help

Ground floor



First Floor



**THE ROALD DAHL
MUSEUM AND
STORY CENTRE**

www.roalddahlmuseum.org
